

# HISTORY OF ARCHITECTURE I

## ARC 2313 - SPRING 2022

LECTURE-16  
2 MARCH 2022

*For Friday, 4 March*

***Ingersoll: 98-102, 226-239***

Reminder: Test #2

***Wednesday, 23 March 2022***

(Lectures 12-21)

# ***Architectural traditions in Africa***

Countries of modern day:

ETHIOPIA

TANZANIA

ZIMBABWE

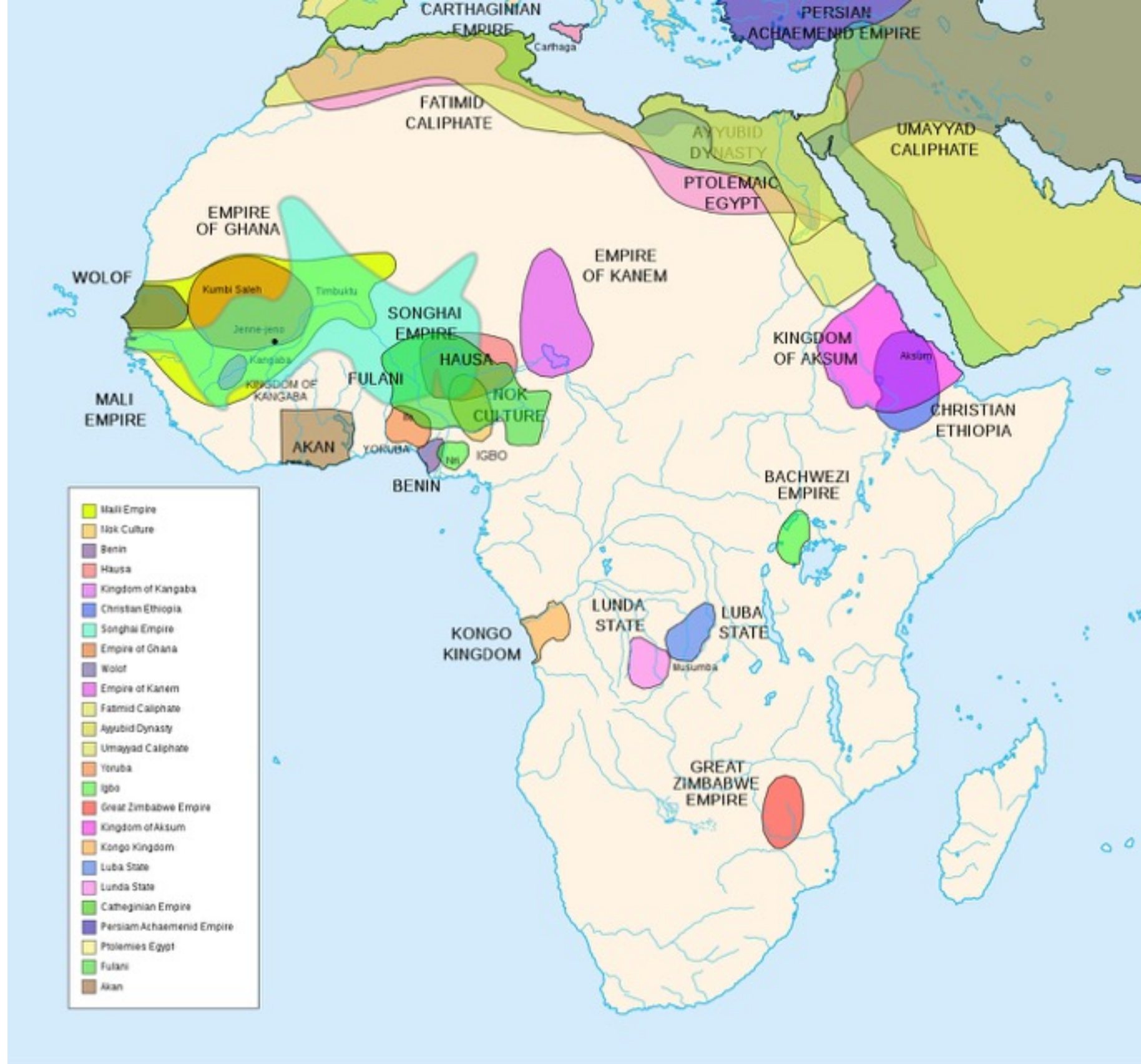
MALI



Nile Valley

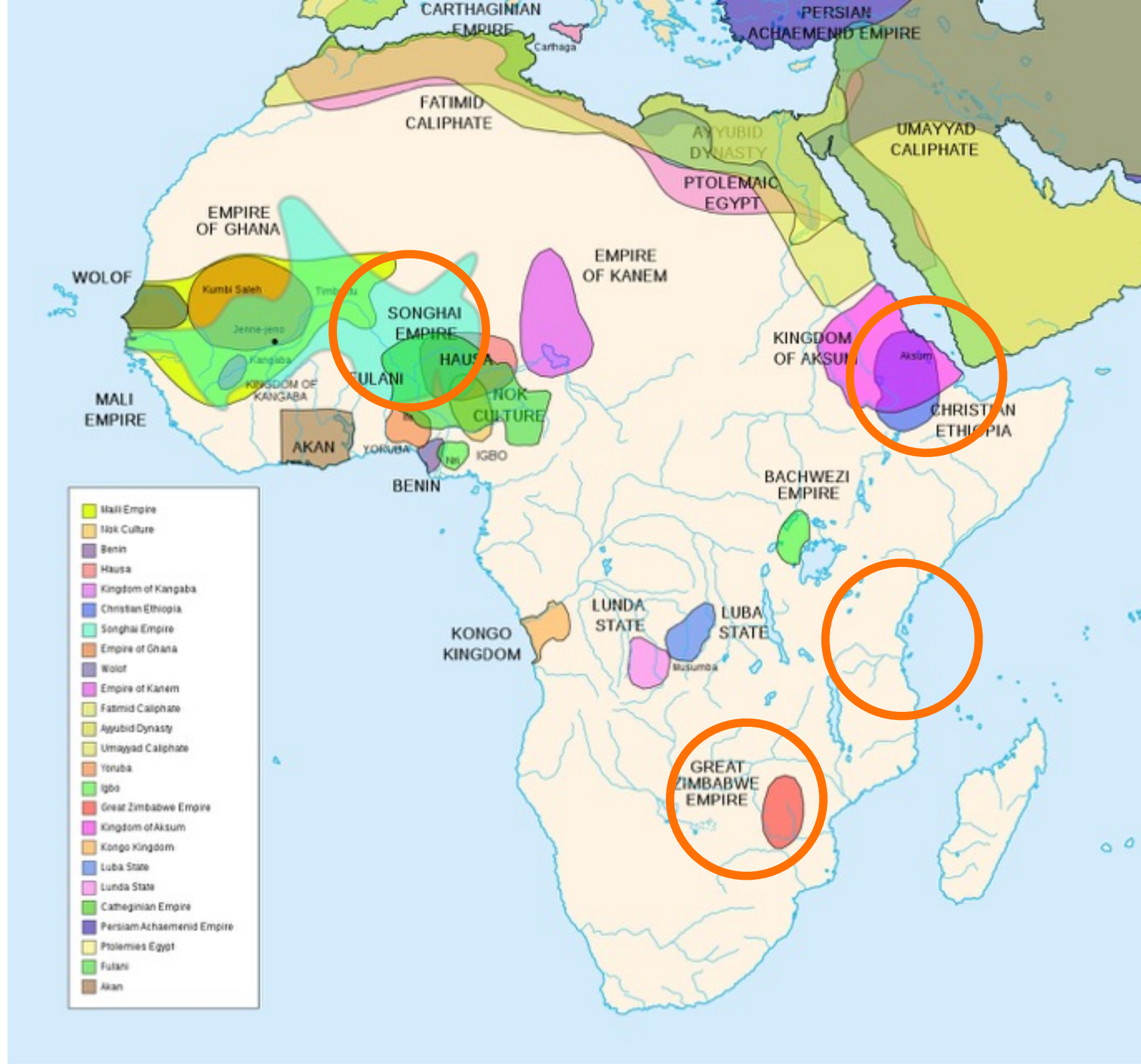
First Cataract

Nubian Desert



# PRE-COLONIAL AFRICAN EMPIRES





# PRE-COLONIAL AFRICAN EMPIRES

STELE

*(plural: stelae)*

## STELE

To commemorate or memorialize a leader  
such as a king; the site of a battle;  
to set-in-stone a decree or law

A source of historical information





Honduras



Egypt

Ancient Greece



Napoleonic Wars  
in France





*Stelae Park in Axum*





**King Ezana's Stele**  
in Axum - **400 CE**





## **Axum Obelisk (400 CE)**

It's actually a **stele**,  
however because its  
top is NOT pyramidal

Also known as the  
***Rome Stele***







# ROCK CUT CHURCHES OF BET GIORGIS



A map of Ethiopia is shown, with its borders and internal regional divisions outlined in black. The country is colored in a light yellow. Surrounding areas are in shades of gray, and bodies of water are in light blue. Two locations are marked with orange circles and dots. The label 'Axum' is in orange text to the right of the first circle. The label 'Bet Giorgis' is in orange text below the second circle.

**Axum**

**Bet Giorgis**



# Bet Giorgis rock-cut church (c 1200 CE)

Lalibela, Ethiopia







## ***Bet Giorgis***

Meaning:  
Church of  
St. George

(c 1200 CE)

***Zagwe Dynasty***

KILWA KISIWANI





**Location of Kilwa Kisiwani in Tanzania**



QVIL OA

Kilwa Kisiwani 1572







Emir's Palace  
and Mosque  
at ***Kilwa Kisiwani***  
overlooking  
slave market

c 1200 CE



***Husuni Kubwa*** slave market at Kilwa Kisiwani  
c 1200 CE



GREAT ZIMBABWE



# Great Zimbabwe







***Great Zimbabwe*** means ***great stone structures***

1200-1500 CE





1906 photograph





No known purpose for the structure besides possibly religious or ritual importance, or symbolic status





*Great Zimbabwe*





*Great Zimbabwe*





*Great Zimbabwe*





*Great Zimbabwe*



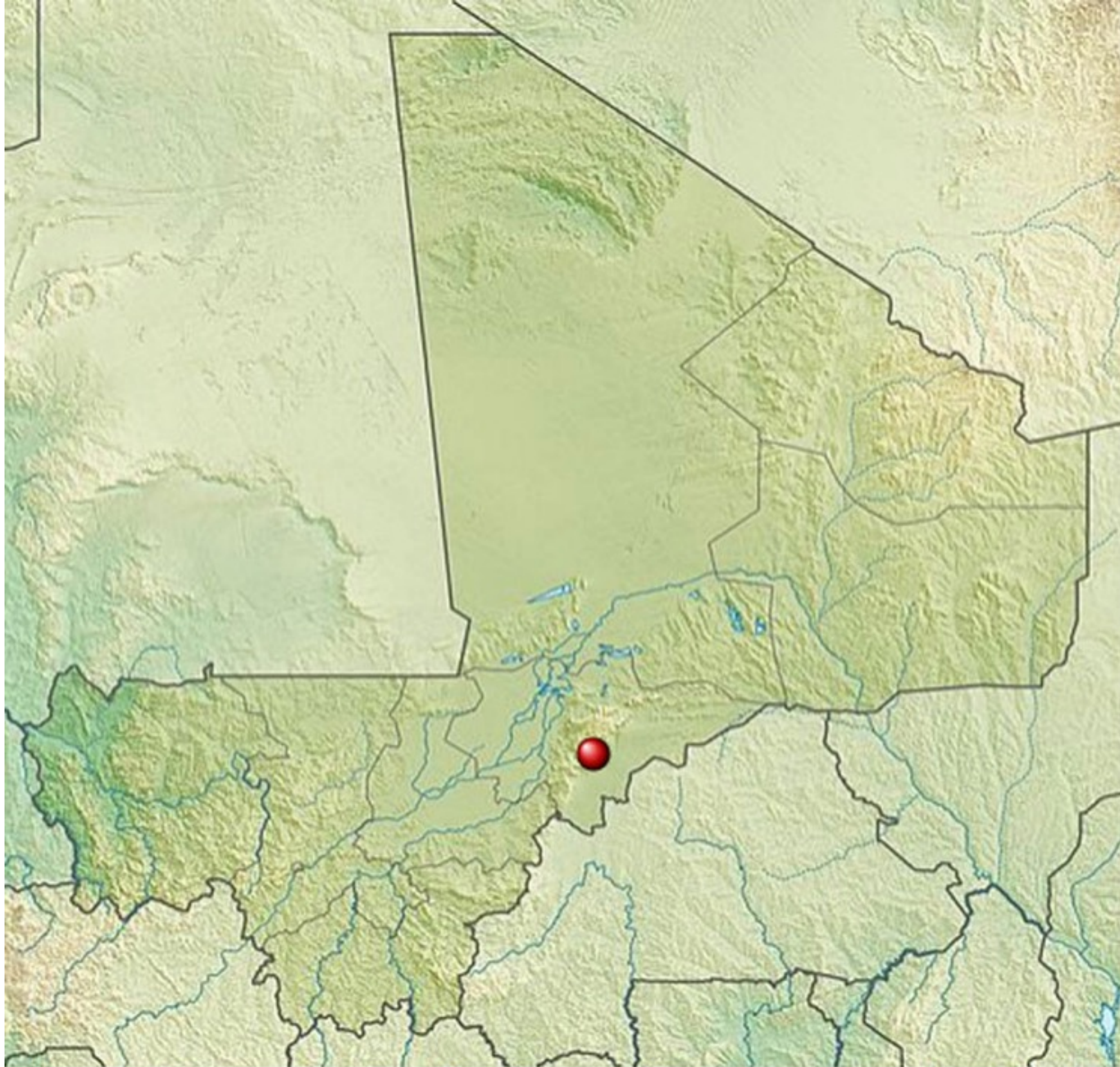


# *Great Zimbabwe*

MALI

*(Cities and the Escarpment)*





**Location of Bandiagara Escarpment in Mali**



# *Square Huts of the Dogon* in Mali



Pushed up against escarpment for protection against Islamization and capture for the slave trade





## ***Square Huts of the Dogon*** in Mali

Pushed up against the Bandiagara Escarpment for protection





*Square Huts of the Dogon in Mali*



SAHEL

*(Western edge of the Sahara Desert)*



The concept of a

## LIVING ARCHITECTURE

An architecture that requires  
constant (annual) rebuilding  
and maintenance due to  
***banco*** (mud) construction  
with ***toron sticks***



*Songhay* empire emerged c 800 CE  
with capital at Gao

*Mande (Mali)* empire emerged 1200 CE

*Songhay* reemerged again about 1500 CE  
with *Askia Mohammed* as leader

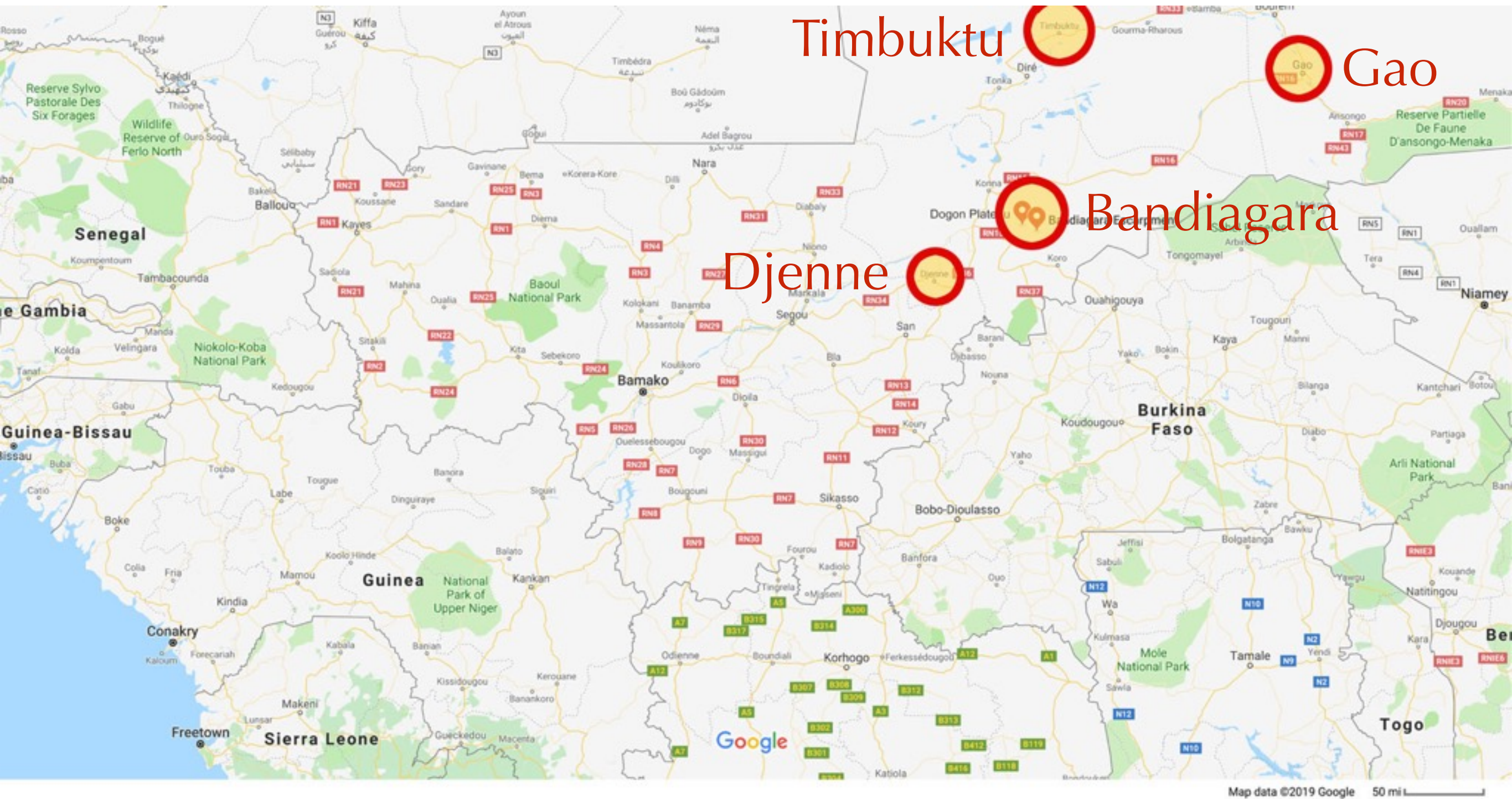




Extent of the Mali Empire (c. 1350)

*Mande Empire or Mali Empire*





Locations of Tibuktu, Gao, Bandiagara Escarpment, Djenné



***Mansa Musa*** was the great leader  
of the Mande.

He traveled to Mecca and Cairo  
about ***1324 CE*** and, afterwards, began  
a building campaign in Timbuktu  
based on what he had seen.



# *Djinguereber* (Great Mosque) at Timbuktu (c 1327 CE)



DJINGUEREBER MOSQUE AT TIMBUKTU





DJINGUEREBER MOSQUE AT TIMBUKTU



372. Afrique Occidentale - SOUDAN — TOMBOUCTOU

Mosquée de Djingerey-ber au sud de la Ville, construite au XI<sup>e</sup> siècle par le Marabout Alkali-Alak



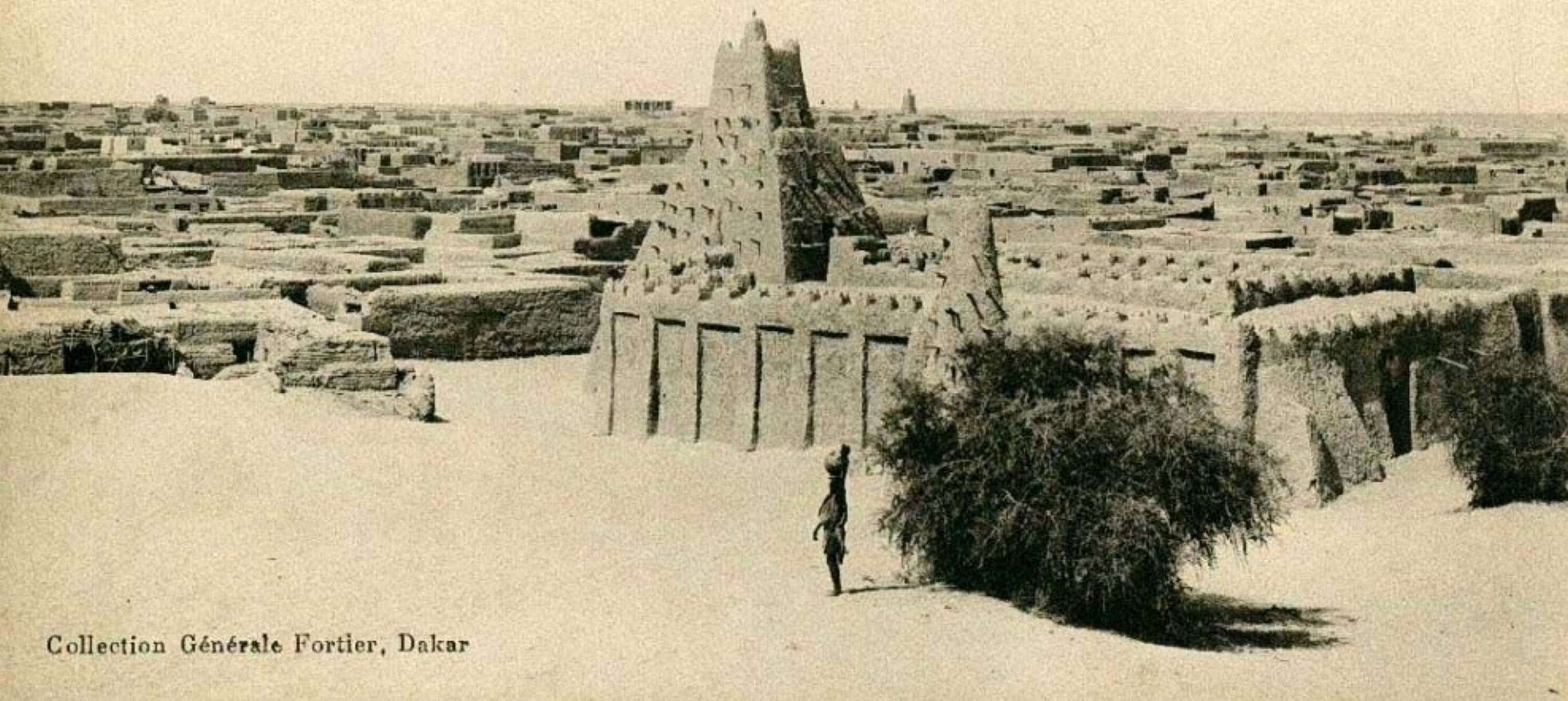
Collection générale FORTIER, Dakar

***Djinguereber*** (Great Mosque) at Timbuktu (c 1327 CE)



368. Afrique Occidentale - SOUDAN - TOMBOUCTOU

La Mosquée de Sankore au nord de la ville construite vers le XI<sup>e</sup> siècle, actuellement envahie par le sable



Collection Générale Fortier, Dakar

SANKORE MOSQUE AT TIMBUKTU





Sankore Mosque  
(c 1340 CE)

SANKORE MOSQUE AT TIMBUKTU



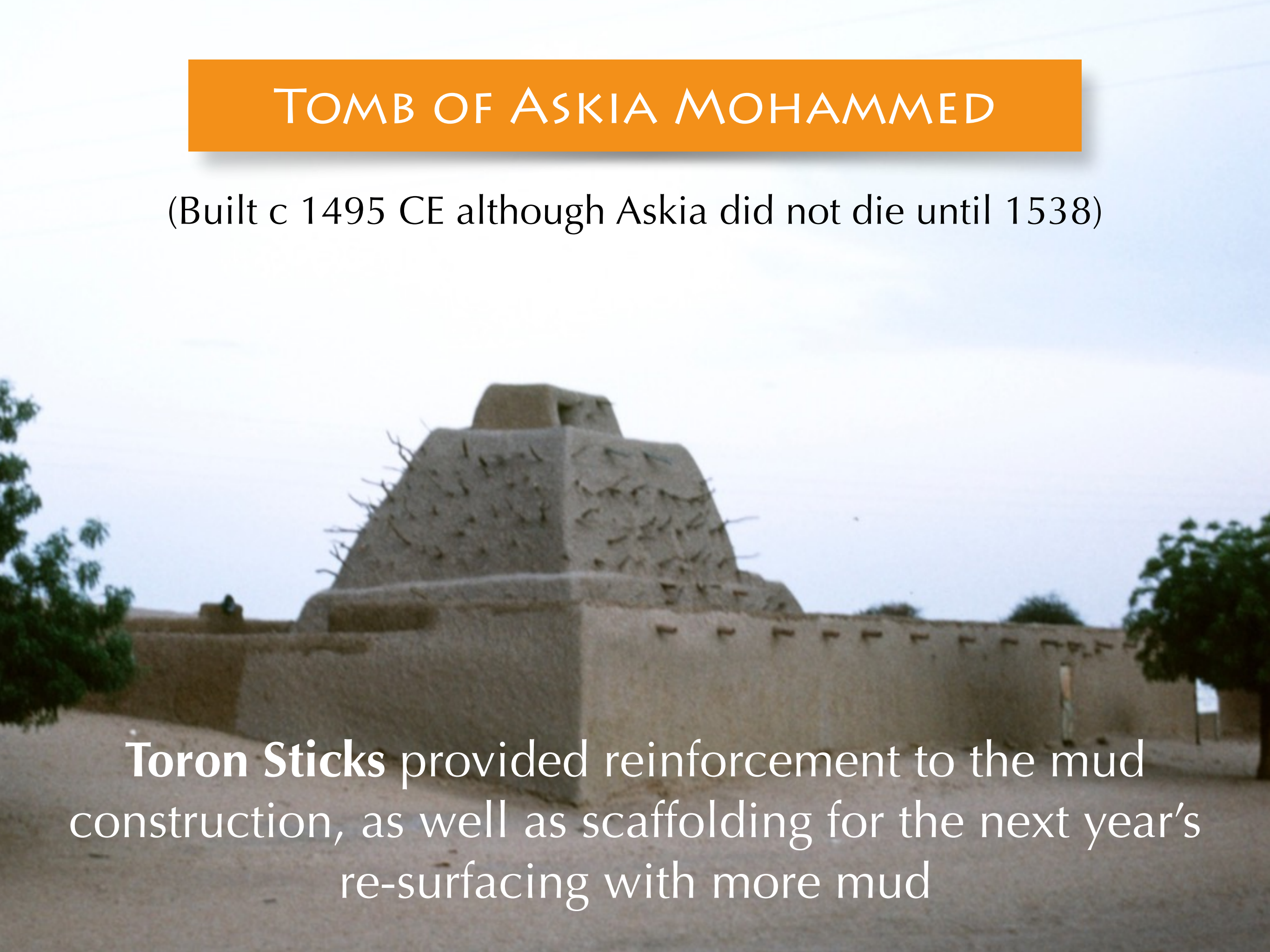


SANKORE MOSQUE AT TIMBUKTU



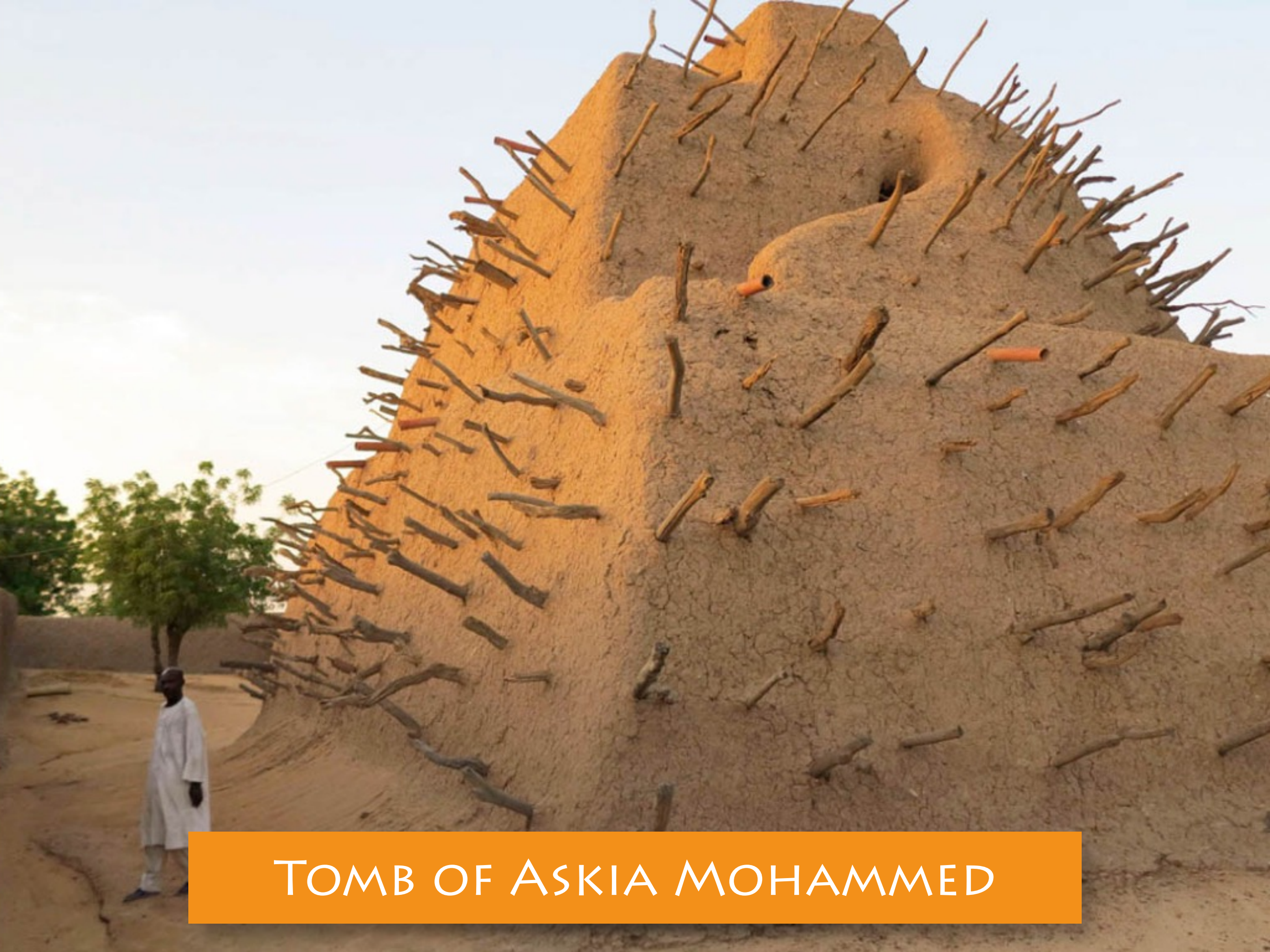
# TOMB OF ASKIA MOHAMMED

(Built c 1495 CE although Askia did not die until 1538)



**Toron Sticks** provided reinforcement to the mud construction, as well as scaffolding for the next year's re-surfacing with more mud





TOMB OF ASKIA MOHAMMED





Historical photograph of Tomb of Askia Mohammed



COLONIES FRANÇAISES

# DJENNE MOSQUE



SENÉGAL-SOUDAN — Ruines de la Mosquée de Djenné

H. Duret, à Kayes

Ruins of *Djenne Mosque* (photo c 1900)





Djenné Mosque rebuilt under French Colonial government  
in early 20th century





Djenne Mosque





Djenne Mosque



end